

# NuPac®

## TYPE A 20D-TA



Pacific Development Services Inc.

### NuPac® TYPE A ISO Container 20D-TA



The NuPac® Model Number 20D-TA is a purpose-built package specifically developed for the nuclear industry.

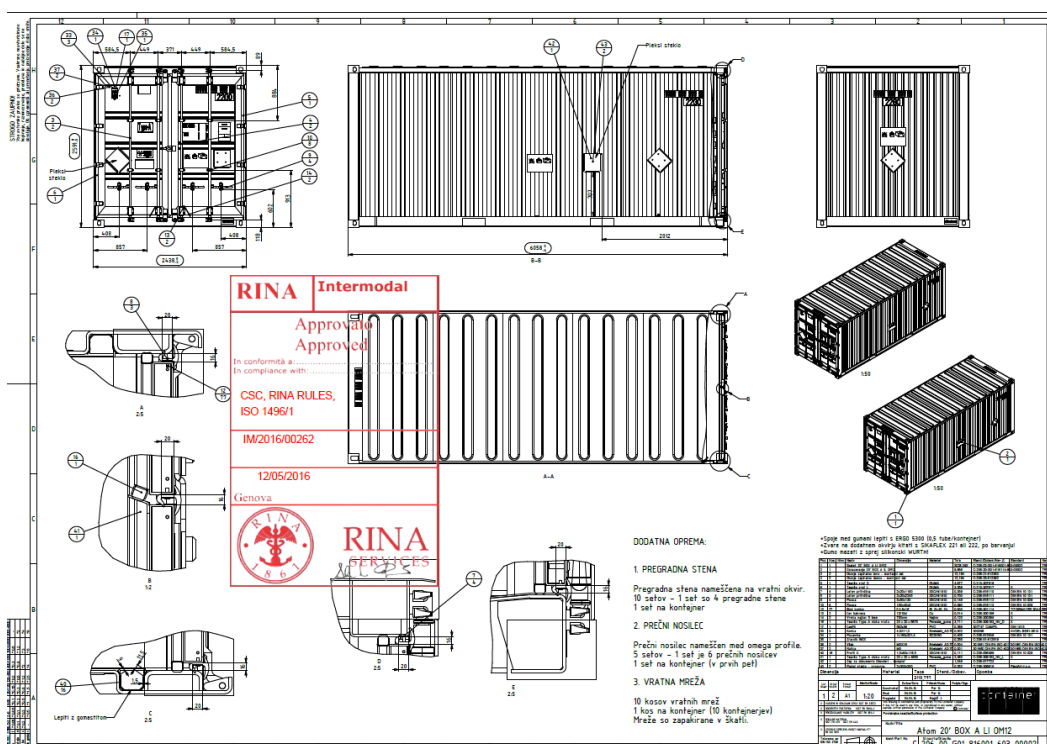
The NuPac 20D-TA is licensed and certified (TYPE A) in full compliance with Title 49 of the Code of Federal Regulations and IAEA SSR-6.

The package is Manufactured and tested in accordance with ISO-1496 for NuPac by Container d.o.o Slovenia

The package has been independently tested and certified TYPE-A in accordance with 49CFR §173.465

### TYPE A Special Design Features

- Nuclear grade door seal system for gas tightness which allows for the effective use of nuclear filters.
- Door 'threshold' avoids the escape of accumulated condensation
- Heavy duty (120 µm thick) coatings inside and out for easier decontamination



# NuPac®

## TYPE A 20D-TA



**Pacific Development Services Inc.**

External Dimensions (nominal)		
	mm	ft - in
Length	6058	19' 10 ½"
Width	2438	8' 0"
Height	2591	8' 6"
Internal Dimensions (nominal)		
	mm	ft - in
Length	5872	19' 3"
Width	2334	7' 8"
Height	2390	7' 10"
Door Opening Dimensions (nominal)		
	mm	ft - in
Width	2330	7' 6 ¾"
Height	2279	7' 5 ½"
Internal Capacity (nominal)		
	M³	Ft³
Capacity	33.2	1,172
Weights		
	Kg.	lbs.
Max. Gross	19,050	42,000
Max. Payload	16,040	35,360
Est. Tare	3,010	6,640

All NuPac 20 TYPE A containers are:

- certified for design type and individually inspected by an approved ISO Classification Society, BV, ABS, RINA, LR or CCS.
- provided with (T.I.R) Customs Certification
- registered and certified and comply with the International Union of Railways
- provided with C.S.C. Certification and door placard
- certified in compliance with the requirements of the International Convention for Safe Containers. IAEA SSR-6 certified for road, air and sea for Industrial Type IP-2 solids